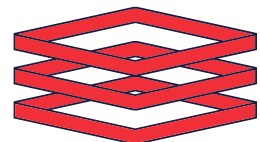




american family care[®]
The Right Care. Right Now.



ENTERA
Your total branding solution

AFC URGENT CARE FAMILY CARE
5708 Ridge Ave
(Roxborough) Philadelphia, PA 19128



SITE PLAN

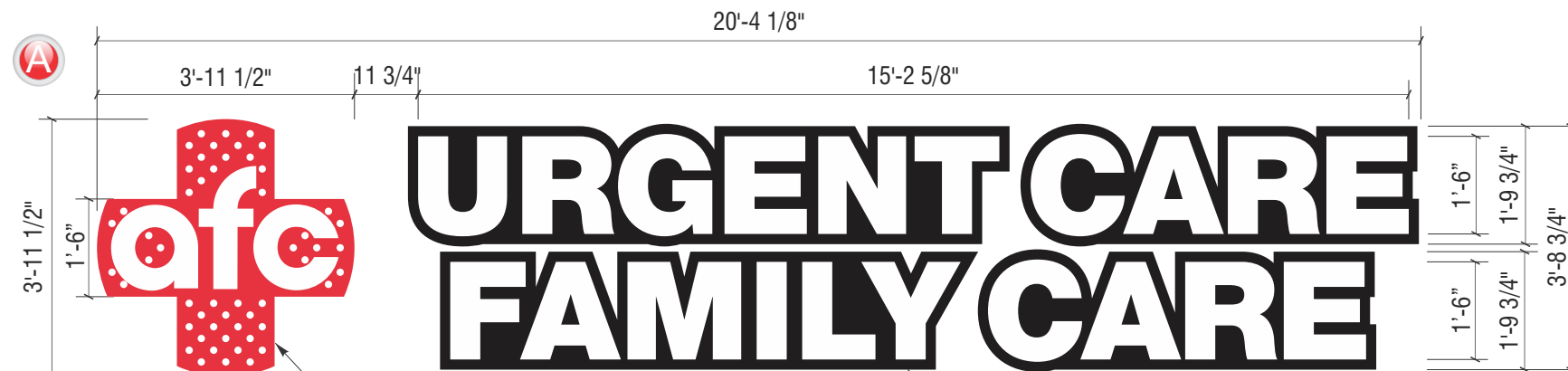


5708 RIDGE AVENUE - BIRDS EYE VIEW

- A** UC-FC-18P CHANNEL LETTER SET
- B** UC-FC-12P CHANNEL LETTER SET
- C** 4'-11 1/2" WALL LOGO



CL-FC-18P NON-ILLUMINATED REMOTE MOUNT CHANNEL LETTER SET W/ ILLUMINATED LOGO • 80.53 SQ FT

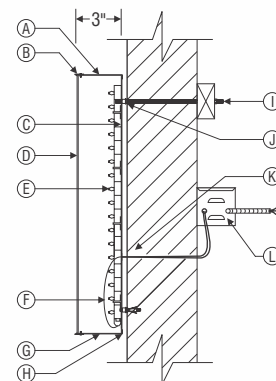


INTERNALLY ILLUMINATED LOGO

NON-ILLUMINATED CHANNEL LETTERS W/ GOOSENECK LIGHTING

L.E.D. CHANNEL LETTER MOUNTING DETAIL (EXTERIOR)

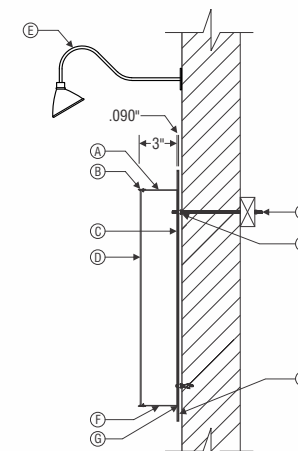
- A. .040" ALUMINUM 3" RETURNS LOGO: PAINTED RED
- B. 1" RED TRIM CAP FOR LOGO
- C. .050" ALUMINUM BACKS - INSIDES PRE-FINISHED WHITE
- D. 3/16" WHITE POLYCARBONATE FACES LOGO: W/ 3M 3630-33 RED VINYL
- E. G.E. TETRA MAX 24V WHITE LEDs
- F. POWER CABLE LOW VOLTAGE SHIELDED W/ STRAIN RELIEF STARTING FROM POWER SUPPLY THEN LETTER TO LETTER (BEHIND FASCIA)
- G. 1/4" WEEP HOLES AS REQUIRED (FOR EXTERIOR INSTALLATION ONLY)
- H. SILICONE BEAD AROUND THE INSIDE OF RETURN AND BACK TO SEAL FROM WATER LEAKAGE
- I. 1/4" LAGBOLTS OR 1/4" THREADED RODS WITH 2" x 4" WOOD BLOCKING AS REQ'D
- J. 1/4" RIV NUTS AS REQ'D
- K. PAIGE WALL BUSTER RUNNING TO SECONDARY CONNECTION
- * NOTE: GENERAL CONTRACTOR TO HAVE PRIMARY CONNECTION HOOKED UP
- L. STANDARD POWER SUPPLY HOUSED IN A WEATHERPROOF SHEET METAL BOX



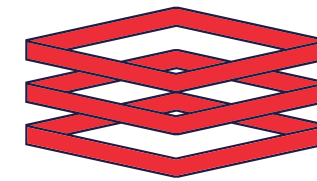
TYPICAL WALL SECTION: NOT TO SCALE

LOGO MOUNTING DETAIL W/ GOOSENECK LIGHTING (EXTERIOR)

- A. .040" ALUMINUM 3" RETURNS LETTERS: PAINTED BLACK
- B. 1" BLACK TRIM CAP FOR LETTERS
- C. .050" ALUMINUM BACKS - INSIDES PRE-FINISHED WHITE
- D. 3/16" WHITE POLYCARBONATE FACES
- E. **GOOSENECK LIGHTING:** 14" Angle Shade - Spun 1100 Aluminum Alloy finish - UL Wet Listed when Installed on a Stem or outdoor light extension arm. 3/4" Diameter Goose-neck Arm, 9.25" x 26", Cast Back Plate, 96" lead wire.
- F. 1/4" WEEP HOLES AS REQUIRED (FOR EXTERIOR INSTALLATION ONLY)
- G. SILICONE BEAD AROUND THE INSIDE OF RETURN AND BACK TO SEAL FROM WATER LEAKAGE
- H. 1/4" LAGBOLTS OR 1/4" THREADED RODS WITH 2" x 4" WOOD BLOCKING AS REQ'D
- I. 1/4" RIV NUTS AS REQ'D
- J. .090" ALUMINUM BACKER PAINTED BLACK



TYPICAL WALL SECTION: NOT TO SCALE



ENTERA

Your total branding solution

5900 VENTURE CROSSINGS BLVD

PANAMA CITY, FL 32409

PH: 850-763-7982

FAX: 850-392-0673

www.enterabrading.com

THIS DOCUMENT CONTAINS PROPRIETARY AND CONFIDENTIAL INFORMATION OF ENTERA, L.L.C. AND SHALL NOT BE USED, DISCLOSED OR REPRODUCED, IN WHOLE OR IN PART, FOR ANY PURPOSE OTHER THAN TO EVALUATE THIS DOCUMENT, WITHOUT THE PRIOR WRITTEN CONSENT OF ENTERA, L.L.C. TITLE IN AND TO THIS DOCUMENT AND ALL INFORMATION CONTAINED HEREIN REMAINS AT ALL TIMES PROPERTY OF ENTERA, L.L.C.

COLOR NOTES

- WHITE
- 3M 3630-33 RED VINYL (LOGO)
- BLACK

REVISION

1.	XXXXX
2.	XXXXX
3.	XXXXX
4.	XXXXX

ARTIST

MW

CLIENT

AFC

SCALE

3/8" = 1'-0"

DATE

02.21.21

LOCATION

5708 Ridge Ave
(Roxborough) Philadelphia, PA 19128

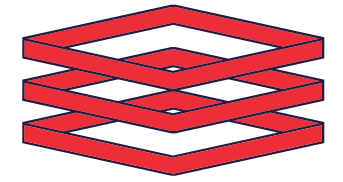
H: MARKETING DESIGN / CDOR / A / AFC / PHILADELPHIA, PA.cdr



DEPARTMENT ART



12" CL-FC-P NON-ILLUMINATED REMOTE MOUNT CHANNEL LETTER SET W/ ILLUMINATED LOGO • 35.74 SQFT



ENTERA

Your total branding solution

5900 VENTURE CROSSINGS BLVD

PANAMA CITY, FL 32409

PH: 850-763-7982

FAX: 850-392-0673

www.enterabrading.com

THIS DOCUMENT CONTAINS PROPRIETARY AND CONFIDENTIAL INFORMATION OF ENTERA, LLC. AND SHALL NOT BE USED, DISCLOSED OR REPRODUCED, IN WHOLE OR IN PART, FOR ANY PURPOSE OTHER THAN TO EVALUATE THIS DOCUMENT, WITHOUT THE PRIOR WRITTEN CONSENT OF ENTERA, LLC. TITLE IN AND TO THIS DOCUMENT AND ALL INFORMATION CONTAINED HEREIN REMAINS AT ALL TIMES PROPERTY OF ENTERA, LLC.

COLOR NOTES

- WHITE
- 3M 3630-33 RED VINYL (LOGO)
- BLACK

REVISION

1.	XXXXX
2.	XXXXX
3.	XXXXX
4.	XXXXX

ARTIST

MW

CLIENT

AFC

SCALE

3/4" = 1'-0"

DATE

02.21.21

LOCATION

5708 Ridge Ave
(Roxborough) Philadelphia, PA 19128

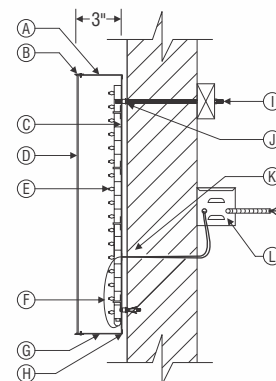
H: MARKETING DESIGN / CDR / A / AFC / PHILADELPHIA, PA.cdr



DEPARTMENT
ART

L.E.D. CHANNEL LETTER MOUNTING DETAIL (EXTERIOR)

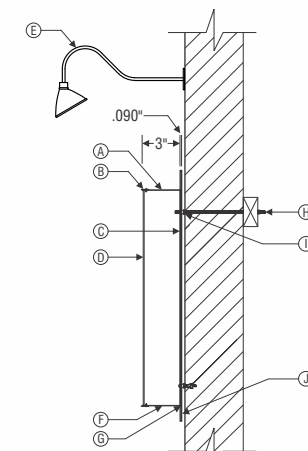
- A. .040" ALUMINUM 3" RETURNS LOGO: PAINTED RED
- B. 1" RED TRIM CAP FOR LOGO
- C. .050" ALUMINUM BACKS - INSIDES PRE-FINISHED WHITE
- D. 3/16" WHITE POLYCARBONATE FACES LOGO: W/ 3M 3630-33 RED VINYL
- E. G.E. TETRA MAX 24V WHITE LEDs
- F. POWER CABLE LOW VOLTAGE SHIELDED W/ STRAIN RELIEF STARTING FROM POWER SUPPLY THEN LETTER TO LETTER (BEHIND FASCIA)
- G. 1/4" WEEP HOLES AS REQUIRED (FOR EXTERIOR INSTALLATION ONLY)
- H. SILICONE BEAD AROUND THE INSIDE OF RETURN AND BACK TO SEAL FROM WATER LEAKAGE
- I. 1/4" LAGBOLTS OR 1/4" THREADED RODS WITH 2" x 4" WOOD BLOCKING AS REQ'D
- J. 1/4" RIV NUTS AS REQ'D
- K. PAIGE WALL BUSTER RUNNING TO SECONDARY CONNECTION
* NOTE: GENERAL CONTRACTOR TO HAVE PRIMARY CONNECTION HOOKED UP
- L. STANDARD POWER SUPPLY HOUSED IN A WEATHERPROOF SHEET METAL BOX



TYPICAL WALL SECTION: NOT TO SCALE

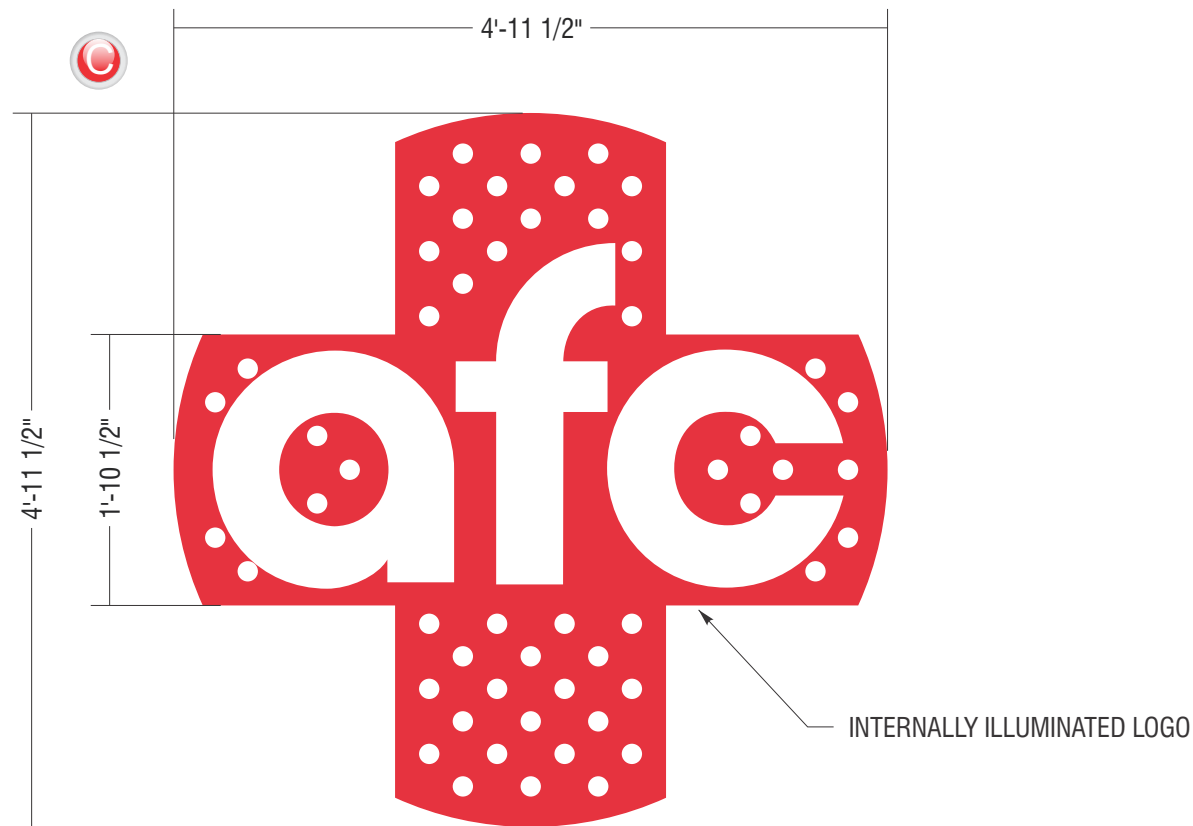
LOGO MOUNTING DETAIL W/ GOOSENECK LIGHTING (EXTERIOR)

- A. .040" ALUMINUM 3" RETURNS LETTERS: PAINTED BLACK
- B. 1" BLACK TRIM CAP FOR LETTERS
- C. .050" ALUMINUM BACKS - INSIDES PRE-FINISHED WHITE
- D. 3/16" WHITE POLYCARBONATE FACES
- E. **GOOSENECK LIGHTING:**
14" Angle Shade - Spun 1100 Aluminum Alloy finish - UL Wet Listed when Installed on a Stem or outdoor light extension arm. 3/4" Diameter Goose-neck Arm, 9.25" x 26", Cast Back Plate, 96" lead wire.
- F. 1/4" WEEP HOLES AS REQUIRED (FOR EXTERIOR INSTALLATION ONLY)
- G. SILICONE BEAD AROUND THE INSIDE OF RETURN AND BACK TO SEAL FROM WATER LEAKAGE
- H. 1/4" LAGBOLTS OR 1/4" THREADED RODS WITH 2" x 4" WOOD BLOCKING AS REQ'D
- I. 1/4" RIV NUTS AS REQ'D
- J. .090" ALUMINUM BACKER PAINTED BLACK



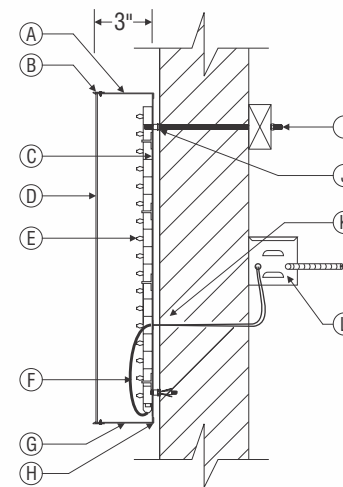
TYPICAL WALL SECTION: NOT TO SCALE

4'-11 1/2" INTERNALLY ILLUMINATED REMOTE MOUNT LOGO • 24.58 SQFT

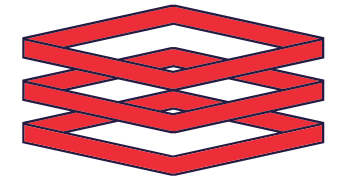


L.E.D. CHANNEL LETTER MOUNTING DETAIL (EXTERIOR)

- | | |
|--|---|
| <p>A. .040" ALUMINUM 3" RETURNS
LOGO: PAINTED RED</p> <p>B. 1" RED TRIM CAP FOR LOGO</p> <p>C. .050" ALUMINUM BACKS - INSIDES
PRE-FINISHED WHITE</p> <p>D. 3/16" WHITE POLYCARBONATE FACES
LOGO: W/ 3M 3630-33 RED VINYL</p> <p>E. G.E. TETRA MAX 24V WHITE LEDs</p> <p>F. POWER CABLE LOW VOLTAGE SHIELDED
W/ STRAIN RELIEF
STARTING FROM POWER SUPPLY
THEN LETTER TO LETTER (BEHIND FASCIA)</p> <p>G. 1/4" WEEP HOLES AS REQUIRED (FOR
EXTERIOR INSTALLATION ONLY)</p> | <p>H. SILICONE BEAD AROUND THE INSIDE
OF RETURN AND BACK TO SEAL FROM
WATER LEAKAGE</p> <p>I. 1/4" LAGBOLTS OR 1/4" THREADED RODS
WITH 2" x 4" WOOD BLOCKING AS REQ'D</p> <p>J. 1/4" RIV NUTS AS REQ'D</p> <p>K. PAIGE WALL BUSTER RUNNING TO
SECONDARY CONNECTION
* NOTE: GENERAL CONTRACTOR TO HAVE
PRIMARY CONNECTION HOOKED UP</p> <p>L. STANDARD POWER SUPPLY HOUSED
IN A WEATHERPROOF SHEET METAL BOX</p> |
|--|---|



TYPICAL WALL SECTION:
NOT TO SCALE



ENTERA

Your total branding solution

5900 VENTURE CROSSINGS BLVD

PANAMA CITY, FL 32409



PH: 850-763-7982

FAX: 850-392-0673

www.enterabrading.com

THIS DOCUMENT CONTAINS PROPRIETARY AND CONFIDENTIAL INFORMATION OF ENTERA, L.L.C. AND SHALL NOT BE USED, DISCLOSED OR REPRODUCED, IN WHOLE OR IN PART, FOR ANY PURPOSE OTHER THAN TO EVALUATE THIS DOCUMENT, WITHOUT THE PRIOR WRITTEN CONSENT OF ENTERA, L.L.C. TITLE IN AND TO THIS DOCUMENT AND ALL INFORMATION CONTAINED HEREIN REMAINS AT ALL TIMES PROPERTY OF ENTERA, L.L.C.

COLOR NOTES

-  WHITE
-  3M 3630-33 RED VINYL (LOGO)

REVISION

1.	XXXXX
2.	XXXXX
3.	XXXXX
4.	XXXXX

ARTIST

MW

CLIENT

AFC

SCALE

3/4" = 1'-0"

DATE

02.21.21

LOCATION

5708 Ridge Ave
(Roxborough) Philadelphia, PA 19128

H: MARKETING DESIGN / CDR / A / AFC / PHILADELPHIA, PA.cdr



DEPARTMENT:
ART



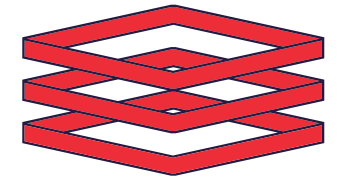
EAST FRONT ELEVATION • PROPOSED SIGNAGE

INTERNALLY ILLUMINATED LOGO

NON-ILLUMINATED CHANNEL LETTERS W/ GOOSENECK LIGHTING



EAST ELEVATION



ENTERA

Your total branding solution

5900 VENTURE CROSSINGS BLVD

PANAMA CITY, FL 32409

PH: 850-763-7982

FAX: 850-392-0673

www.enterabrading.com

THIS DOCUMENT CONTAINS PROPRIETARY AND CONFIDENTIAL INFORMATION OF ENTERA, LLC. AND SHALL NOT BE USED, DISCLOSED OR REPRODUCED, IN WHOLE OR IN PART, FOR ANY PURPOSE OTHER THAN TO EVALUATE THIS DOCUMENT, WITHOUT THE PRIOR WRITTEN CONSENT OF ENTERA, LLC. TITLE IN AND TO THIS DOCUMENT AND ALL INFORMATION CONTAINED HEREIN REMAINS AT ALL TIMES PROPERTY OF ENTERA, LLC.

COLOR NOTES

REVISION

1.	XXXXX
2.	XXXXX
3.	XXXXX
4.	XXXXX

ARTIST

MW

CLIENT

AFC

SCALE

1/8" = 1'-0"

DATE

02.21.21

LOCATION

5708 Ridge Ave
(Roxborough) Philadelphia, PA 19128

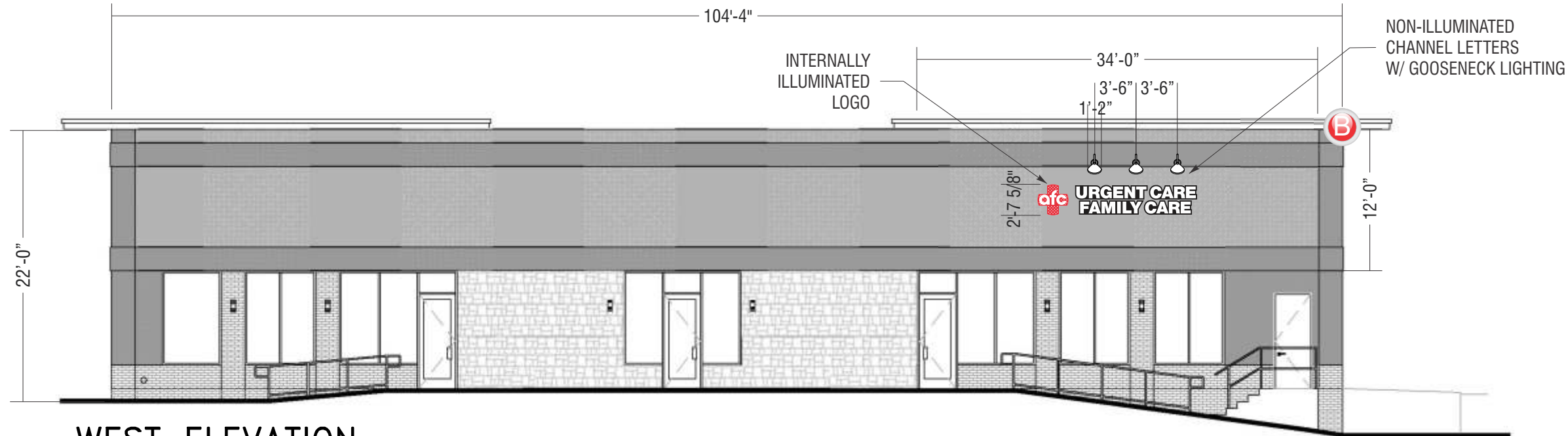
H: MARKETING DESIGN / CDR / A / AFC / PHILADELPHIA, PA.cdr



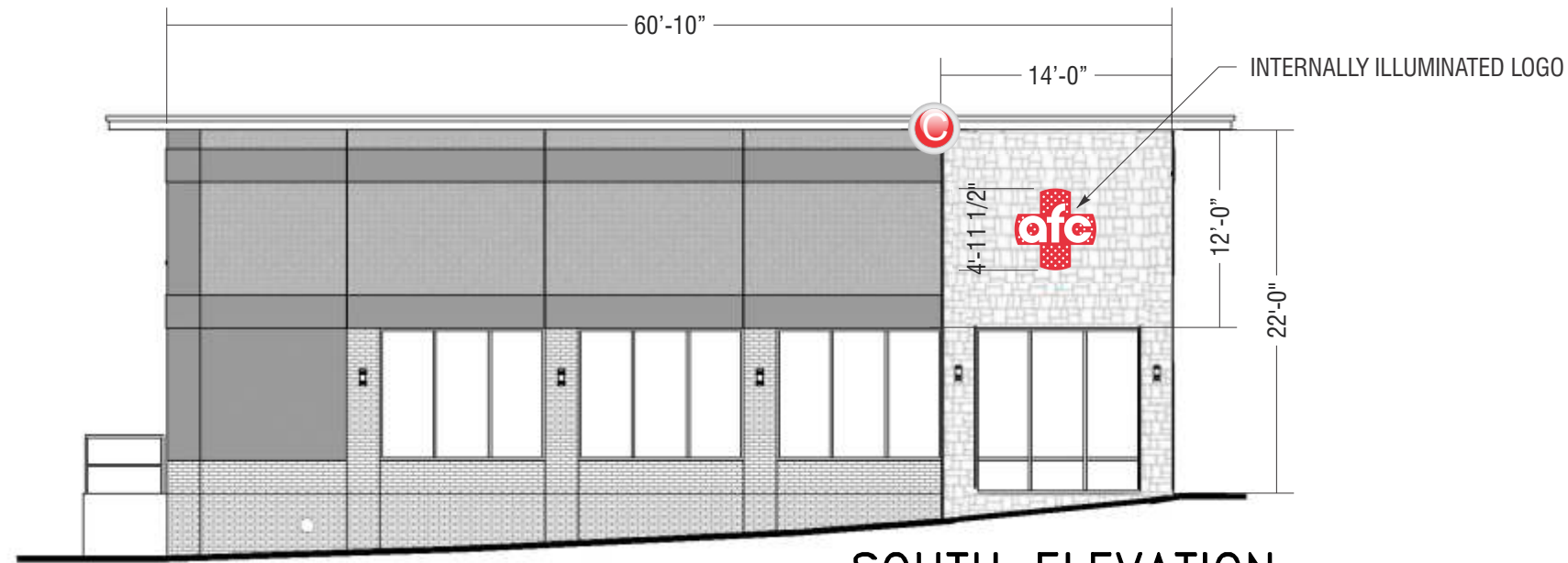
DEPARTMENT
ART



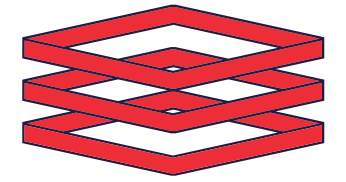
WEST & SOUTH SIDE ELEVATION • PROPOSED SIGNAGE



WEST ELEVATION



SOUTH ELEVATION



ENTERA

Your total branding solution

5900 VENTURE CROSSINGS BLVD

PANAMA CITY, FL 32409

PH: 850-763-7982

FAX: 850-392-0673

www.enterabrading.com

THIS DOCUMENT CONTAINS PROPRIETARY AND CONFIDENTIAL INFORMATION OF ENTERA, LLC. AND SHALL NOT BE USED, DISCLOSED OR REPRODUCED, IN WHOLE OR IN PART, FOR ANY PURPOSE OTHER THAN TO EVALUATE THIS DOCUMENT, WITHOUT THE PRIOR WRITTEN CONSENT OF ENTERA, LLC. TITLE IN AND TO THIS DOCUMENT AND ALL INFORMATION CONTAINED HEREIN REMAINS AT ALL TIMES PROPERTY OF ENTERA, LLC.

COLOR NOTES

REVISION

1.	XXXXX
2.	XXXXX
3.	XXXXX
4.	XXXXX

ARTIST

MW

CLIENT

AFC

SCALE

3/32" = 1'-0"

DATE

02.21.21

LOCATION

5708 Ridge Ave
(Roxborough) Philadelphia, PA 19128

H: MARKETING DESIGN / CD / A / AFC / PHILADELPHIA, PA.cdr

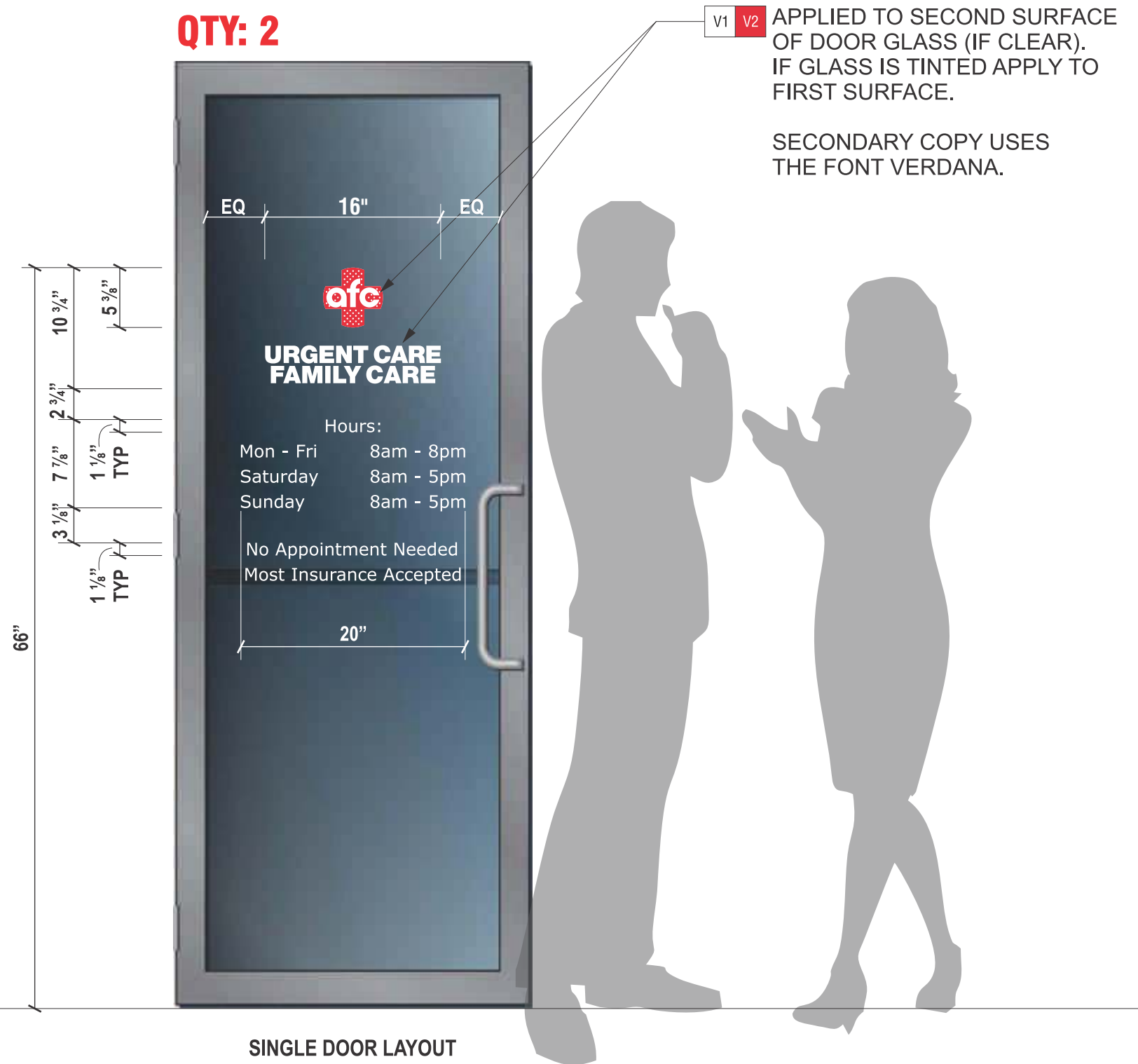


DEPARTMENT
ART



DOOR VINYL LAYOUT

QTY: 2



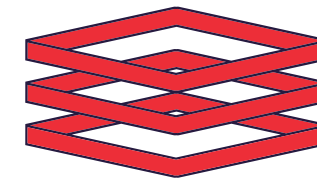
V1 V2 APPLIED TO SECOND SURFACE OF DOOR GLASS (IF CLEAR). IF GLASS IS TINTED APPLY TO FIRST SURFACE.

SECONDARY COPY USES THE FONT VERDANA.

SINGLE DOOR LAYOUT (SIGN TYPE: V1-UC)

COLORS

- V1 3M 3630-33 RED VINYL (LOGO)
- V2 3M 7725-10 WHITE (URGENT CARE)



ENTERA

Your total branding solution

5900 VENTURE CROSSINGS BLVD

PANAMA CITY, FL 32409

PH: 850-763-7982

FAX: 850-392-0673

www.enterabrading.com

THIS DOCUMENT CONTAINS PROPRIETARY AND CONFIDENTIAL INFORMATION OF ENTERA, LLC. AND SHALL NOT BE USED, DISCLOSED OR REPRODUCED, IN WHOLE OR IN PART, FOR ANY PURPOSE OTHER THAN TO EVALUATE THIS DOCUMENT, WITHOUT THE PRIOR WRITTEN CONSENT OF ENTERA, LLC. TITLE IN AND TO THIS DOCUMENT AND ALL INFORMATION CONTAINED HEREIN REMAINS AT ALL TIMES PROPERTY OF ENTERA, LLC.

COLOR NOTES

- WHITE
- 3M 3630-33 RED VINYL (LOGO)
- BLACK

REVISION

1.	XXXXX
2.	XXXXX
3.	XXXXX
4.	XXXXX

ARTIST

MW

CLIENT

AFC

SCALE

1" = 1'-0"

DATE

02.21.21

LOCATION

5708 Ridge Ave
(Roxborough) Philadelphia, PA 19128

H: MARKETING DESIGN / CDR / A / AFC / PHILADELPHIA, PA.cdr



DEPARTMENT: ART