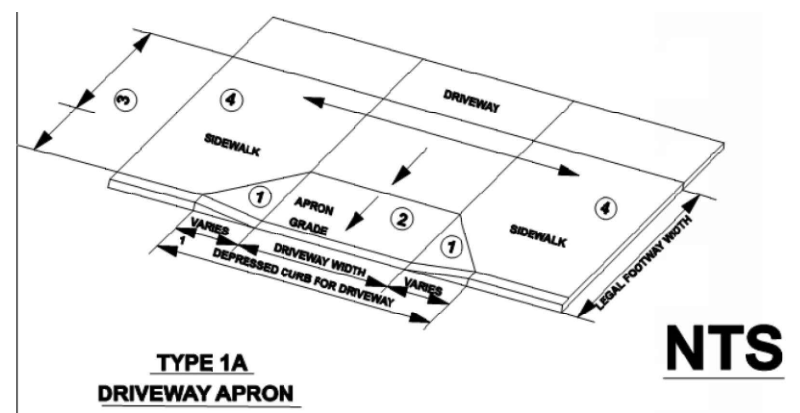
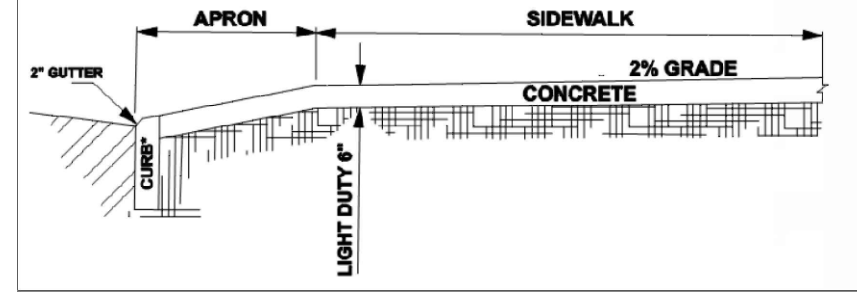


1 2 3 4 5



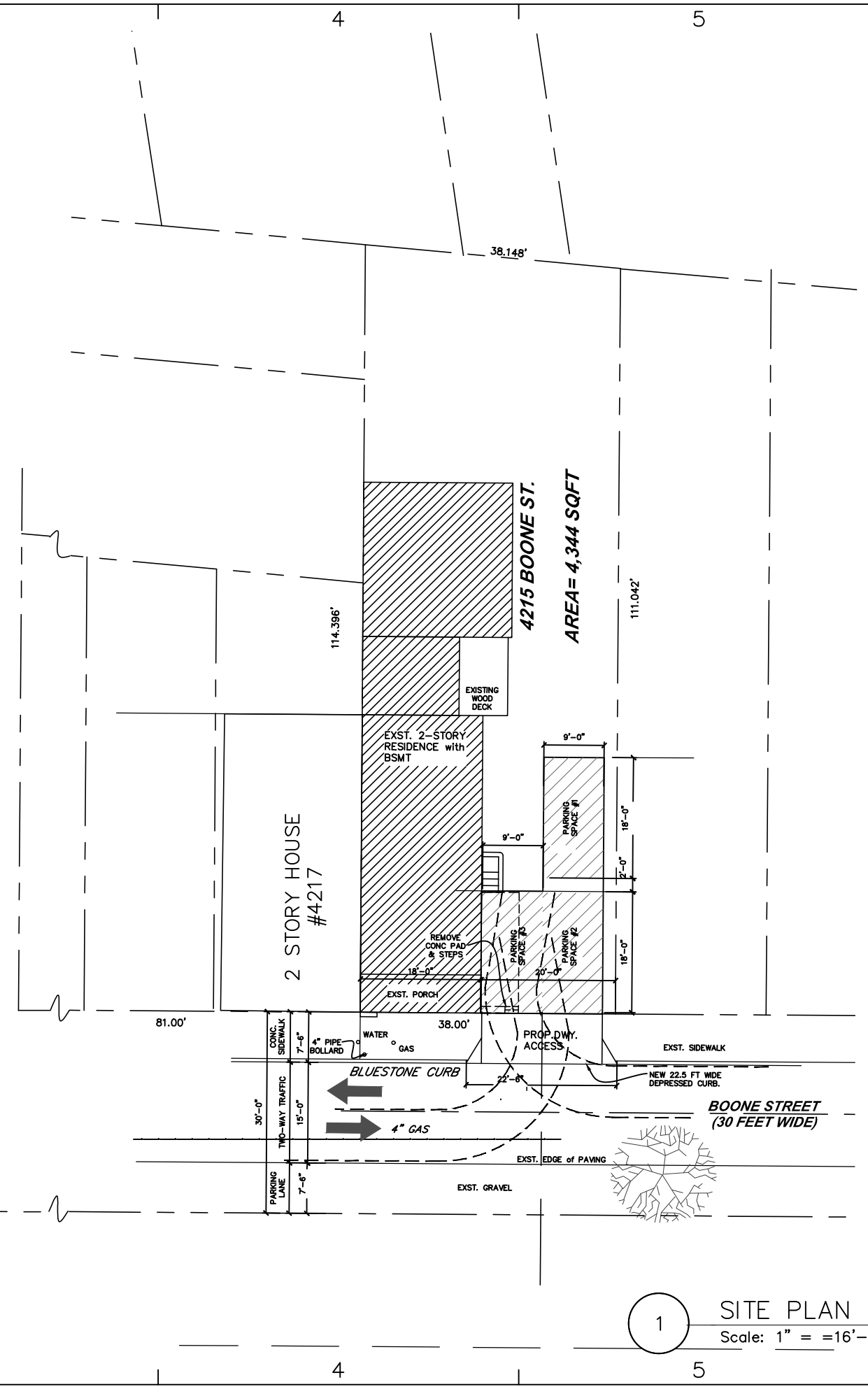
- 1 - SIDE FLARES 10.00% MAX. SLOPE
- 2 - 8.00% MAX. CHANGE IN GRADE BETWEEN ROAD SURFACE AND DRIVEWAY
- 3 - WHERE COMPLETE STREETS STANDARDS CANNOT BE MET WITHIN THE EXISTING LEGAL FOOTWAY, MAINTAIN 5' (MIN) CONTINUOUS CLEAR ACCESSIBLE SIDEWALK IN ACCORDANCE WITH RC-67M AND PUB 13M
- 4 - SIDEWALK GRADE ADJUSTMENTS PERMITTED ONLY WHERE 2 - EXCEEDS 8%. THE MAXIMUM GRADE



All that certain lot or piece of ground with the message or tenement thereon erected.
 Situate on the Northeastly side of Boone (formerly Aiky) Street (30 feet wide) at the distance of 81 feet Southeastwardly from the Southeastly side of Rector Street (30 feet wide) in the 21st Ward of the City of Philadelphia.
 Containing in front or breadth on the said Northeastly side of Boone Street 38 feet and extending in length or depth Northeastwardly of that width between parallel lines at right angles to the said Boone Street on the Northwestly line thereof 114 feet 4 and 3/4 inches and on the Southeastly line thereof 111 feet and 1/2 of an inch.
 Being known and numbered as 4215 Boone Street.



↑
RECTOR STREET
(30 FEET WIDE)



1 SITE PLAN
Scale: 1" = 16'-0"



551 Fletcher Road
Wayne, PA 19087
610.688.8140
www.AGGarch.com

CONSULTANTS

PROJECT:
Proposed Off-Street Parking
4215 Boone St
Philadelphia PA

DATE	DESCRIPTION
7-29-21	SUBMIT FOR STREETS DEPT REVIEW

PROJECT NO: 4132
 DWG FILE:
 CAD DWG FILE: 1trpaggj4132r01.dwg
 DRAWN BY: JJ
 CHKD BY: AG
 COPYRIGHT: © 2021 AGG architecture, Inc.

SHEET TITLE
Site Plan, Details

SHEET NUMBER
A1

C:\Users\Tony\Dropbox\4132boone\A1-4132.dwg, Layout1, 11/8/2021 4:41:24 PM